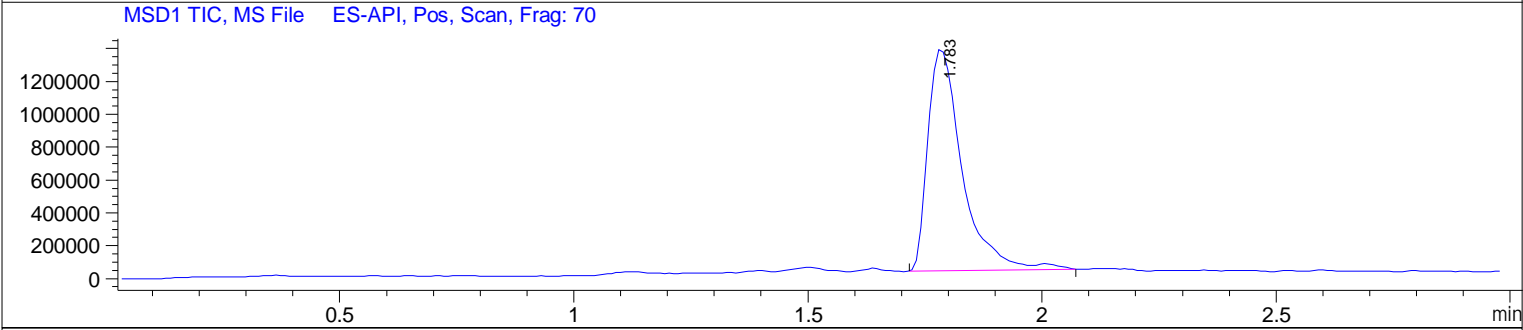
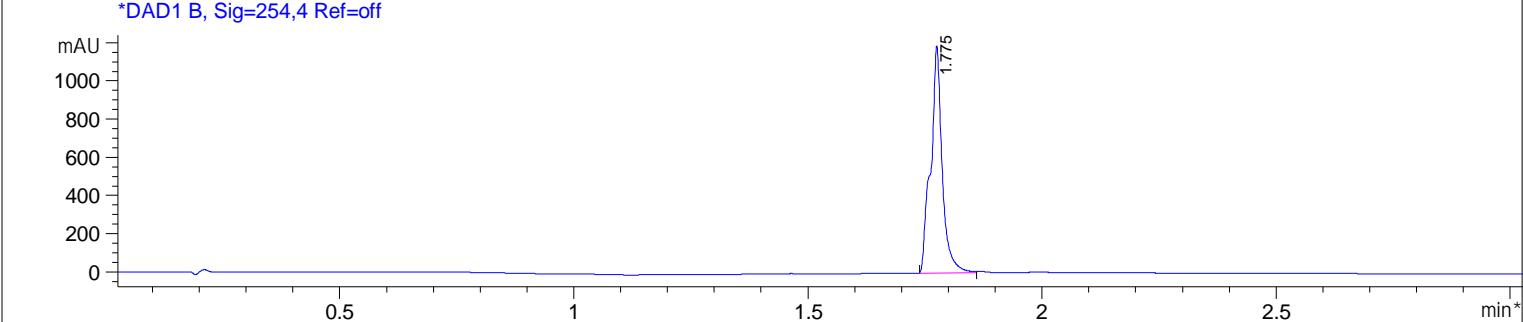
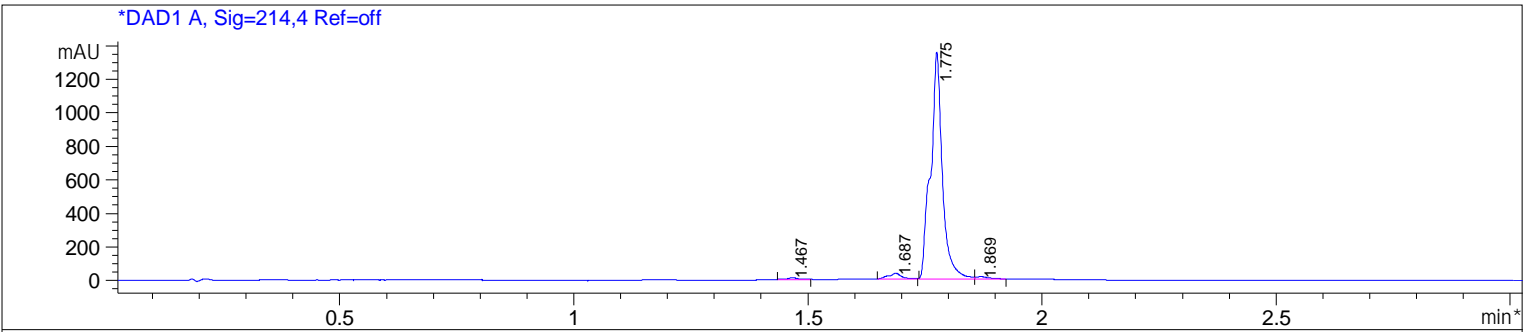


File D:\DATA\PREP\MONITOR\ZXF-1-34126-LCMSA029.D

Injection Date : 8 Jun 22 10:21 am +0800 Tgt Mass(EZX) :
 Sample Name : ZXF-1 Location : P1-F-06
 Acq. Operator : PREP Inj : 1
 Spec. Reported : MS Integration Inj Volume : 1 ul
 Acq. Method : D:\METHODS\1-POS-3MIN.M
 Analysis Method : D:\METHODS\1-POS-3MIN.M
 Sample Info : Easy-Access Method: '1-POS-3MIN.M'
 Method Info : column:HALO C18 (4.6x 30 mm, 2.7um)
 Mobile phase: H2O(0.01%TFA) (A) / ACN(0.01%TFA)(B)
 Elution program: Gradient from 5 to 95% of B in 1.4min at 2ml/min
 Temperature: 50 °C
 Detection: UV (214 , 4 nm ;254 , 4 nm) and MS (ESI, Pos mode ,110 to 1000 amu)



Integration Results for DAD1 A, Sig=214,4 Ref=off

RetTim	Width	Area	Height	Area%
1.47	0.03	23.52	12.09	0.94
1.69	0.03	70.24	35.68	2.80
1.78	0.02	2383.83	1351.52	94.97
1.87	0.03	32.45	16.62	1.29

Integration Results for DAD1 B, Sig=254,4 Ref=off

RetTim	Width	Area	Height	Area%
1.78	0.02	2043.35	1183.24	100.00

Ret. Time: 1.78

<<<< POSITIVE SPECTRA >>>>

